

SPRING/SUMMER 23

ROTORUA

A man and a woman are relaxing in a large, circular wooden hot tub. They are both holding orange drinks. The hot tub is situated on a wooden deck surrounded by dense, lush green foliage, including large ferns. The scene is bathed in warm, golden light, suggesting late afternoon or early morning. The overall atmosphere is peaceful and inviting.

YOUR GUIDE TO ROTORUA

WHAT'S NEW

CRANKWORX

THREE DAYS OF
FAMILY FUN

AND MORE

21-23 OCTOBER 2022

ISUZU UTES WHAKA 100

Isuzu Utes Whaka 100 proudly holds the reputation of one of the toughest mountain bike marathons in the Southern Hemisphere. With races throughout Whakarewarewa Forest ranging from a 5.5 kids' race, through to 100km solo, pairs and teams, there's an option for all.

facebook.com/Whaka100

Mead Norton

5-13 NOVEMBER 2022

CRANKWORX ROTORUA

The world's largest mountain biking festival returns, bringing the best mountain bikers to compete in several events. Crankworx Rotorua is more than just pro-athletes going head to head in downhill, jump and trick events; it's also an exciting festival atmosphere that celebrates the world-renowned mountain biking culture of Rotorua. This is the perfect spectator event, with track-side views as well as giant screens so you'll catch all the action. See our Crankworx Rotorua feature story on page 6.

crankworx.com

12 NOVEMBER 2022

SIX60 SATURDAYS

For the first time ever, SIX60 SATURDAYS will come to Rotorua with the band playing at Rotorua International Stadium. This will be a monumental occasion for the region, with fans from all over the Bay of Plenty, Waikato and other parts of the country sure to attend.

Beginning in 2019 and playing to 50,000 fans at the history-making sell-out show at Auckland's Western Springs Stadium, the SIX60 SATURDAYS tour has grown exponentially. In true SIX60 fashion, 2022 sees the band going bigger once again with six stadium shows across Aotearoa. This is the first time any artist has embarked on a 100% stadium tour throughout all of New Zealand.

rotoruanui.nz/event/six60

KIA ORA & WELCOME

Travel, travel, travel. It seems to be on everyone's minds again, particularly with summer just around the corner!

If your feet are itching to escape, why not visit Rotorua? There is truly something for everyone here, and because there are just so many amazing activities and experiences, OUR plan for this issue of Rotorua Magazine is to help YOU plan!

Let's start with what's new. As in our last edition six months ago, there are even more new things to do and places to eat. See pages 4-5 to learn about a new zipline tour; three new Luge tracks at everyone's favourite attraction, Skyline Rotorua; two new Māori cultural experiences; and more. Plus, a new eco-friendly way to visit the secluded hot pools on Lake Rotoiti is nearly ready for its first guests, and Wai-o-Tapu Thermal Wonderland is getting set to re-open - both of these are happening in October.

If mountain biking is your jam, then coming for the Crankworx Rotorua event and festival from 9 to 13 November is a must. We've put together a handy guide on pages 6-7 with everything you need to know about attending this incredible event that sees the planet's best downhill and trick mountain bikers competing for world titles.

As far as activities go, Rotorua is like a giant pick-n-mix! To make choosing easier, pages 8-10 provide a big overview of many of our best experiences. We've organised them by adventure, history and culture, and outdoorsy stuff. If you select two or three activities from each section, you should be able to create an amazing itinerary that would have you covered for three days. Don't forget to leave time to eat at any of the great cafés, restaurants and the historic Pig & Whistle pub along the way.

If you've got a family weekend to plan for, just head straight to pages 11-12 where we have a three-day family itinerary all planned out for you! Each day contains three or four activity ideas, as well as dining suggestions, and every site is within close proximity of each other, saving you time and petrol.

Last but certainly not least, on page 13 you'll find a quick reference guide to the variety of accommodation options here, including just a few of our many lakeside holiday homes. Alternatively, head to RotoruaNZ.com for many, many more, or contact our friendly Rotorua i-SITE travel experts for assistance.

We hope to see you soon in Rotorua!

CONTENTS

2 What's On

4 What's New in Rotorua

6 Crankworx Returns!

8 Rotorua Has it All

11 Three Days of Family Fun

13 Need a Place to Stay?



WHAT'S ON

Canoe Racing NZ Blue Lake 1 & 2

15-16 OCTOBER & 3-4 DECEMBER 2022

A national sprint regatta held on Lake Tikitapu caters for all age groups, with event distances of 100m, 200m, 500m and 1000m.

canoeracing.org.nz

Children's Weekend

4-5 MARCH 2023

This fun-filled weekend offers a wide range of free family activities hosted in various venues around Rotorua to celebrate children around the world.

rotorualakescouncil.nz

New Zealand Blues and BBQ Festival

25-27 NOVEMBER 2022



Bay of Plenty Blues Club Inc presents its Blues and BBQ Festival, including a weekend of mouth-watering BBQ food, BBQ competitions, and fantastic musicians from Aotearoa and Australia.

bluesandbbq.co.nz

MOUNTAIN BIKING & CYCLING



Giant 2W Gravity Enduro series

Race 1 - 16 October 2022

Race 2 - 4 December 2022

Race 3 - 4-5 March 2023

NZ's premier Enduro race series in the world-renowned Whakarewarewa Forest.

enduronz.com



11 MARCH 2023

XTERRA Rotorua Festival

Since its inception, this event has grown to become one of the best XTERRA events in the world. Nine events of various lengths, set in and around Lake Tikitapu and Whakarewarewa Forest, encourage athletes of all fitness levels and abilities to participate in trail walking or running, mountain biking, duathlons or triathlons.

xterra.co.nz



23-26 MARCH 2023

Volcanic Epic

A unique mountain bike stage race held across 200km of NZ's spectacular geothermal region in Rotorua, Taupō and Tokoroa. Riders compete in either two- or four-day events, across a range of age and speciality categories.

volcanicepic.co.nz

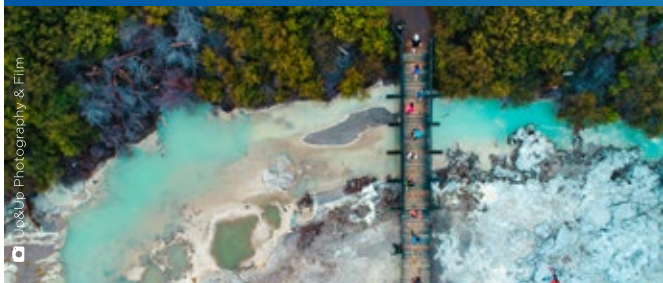
21-24 OCTOBER 2022

Rotorua Bike Festival

The Rotorua Bike Festival delights both bikers and non-bikers alike – a community celebration of all things cycling over four days throughout Rotorua.

rotoruabikefestival.com

RUNNING, WALKING & SWIMMING



20 NOVEMBER 2022 & 26 FEBRUARY 2023

Rotorua Off-road Trail Run/Walk

Events include an off-road half marathon, 10km, 5km, and the Little Devils Race for kids aged 3-10, all in the stunning Whakarewarewa Forest.

eventpromotions.co.nz



11 FEBRUARY 2023

Tarawera Ultramarathon

The Tarawera Ultramarathon is New Zealand's most prestigious trail ultra. Runners compete in 21km, 50km, 102km distances or the ultimate 100-mile endurance run.

taraweraultra.co.nz



25 MARCH 2023

Generation Homes Legend of the Lake

Looking for an open swim for the entire family? This event on Lake Tikitapu includes 100m and 200m courses for kids 7-10 years old, and everyone else can sign up for 500m, 1000m or 3.5k distances.

oceanswim.co.nz

17 SEPTEMBER 2022

Rotorua Marathon & Red Stag Half Marathon

NZ's most iconic marathon features hidden gems, surreal scenery and stunning natural wonders with the full marathon around Lake Rotorua.

rotoruumarathon.co.nz

24-25 SEPTEMBER 2022

Blue Lake 24hr Challenge

A 24-hour, self-supported walk/run event around Lake Tikitapu (Blue Lake). Runners and walkers of any fitness level are invited to try to conquer 100km, the miler or maybe just two or three laps, whatever you're comfortable doing.

bluelake24hr.com

1 OCTOBER 2022

Rotorua Generation Homes Trek the Forest

An event for avid trail runners or walkers. Explore the gems of Rotorua through a 5.5km loop around stunning Lake Tikitapu, or try a more adventurous 16km trail into Whakarewarewa Forest.

kiwiwalkrun.co.nz/event/generation-homes-trek-the-forest

5-6 NOVEMBER 2022

Rotorua Walking Festival

Celebrate walking in the beautiful Rotorua landscape. Includes forest, lakes, parks and geothermal areas.

rotoruanui.nz/event/rotorua-walking-festival

WEEKLY

Rotorua Night Market – Thursdays, 4:30-8:30pm, Tutanekai Street. Food & boutique shopping.



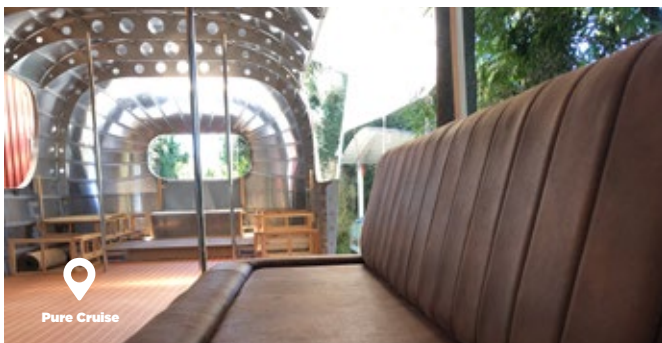
WHAT'S NEW IN ROTORUA?



Rotorua
Ziplines

In Rotorua there's always something new popping up, so even if your last visit was just months ago, the chances are high that you can book a whole new itinerary without doubling up.

In addition to the following newbies, special mention goes out to long-time favourite **Wai-O-Tapu Thermal Wonderland** re-opening on Saturday, 22 October.



Pure Cruise

THE AIRSTREAM PROJECT

After more than a decade of feedback and ideas from both clients and crew, the **Pure Cruise** team has dreamt up, designed and hand-built a totally unique 9.2-meter pontoon vessel with electric drive. The shape, form and finish draw inspiration from classic 1960s Airstream caravans, World War II aircraft, and Italian speed boats. This silent-running, floating work of art will be available for private charter as well as daily cruises to Lake Rotoiti Hot Pools from late October.

ROTORUA ZIPLINES

One of the newest adrenalin adventures to open its doors in Rotorua was created by local guy and long-time adventurer Sam Sutton. The Rotorua Rafting owner recently opened **Rotorua Ziplines** which soars over Kaituna River's waterfalls and through beautiful native forest, and claims to have the steepest and fastest zipline in the country.



MORE LUGE TRACKS

If, during past visits, you loved the thrill of flying down the side of Mt Ngongotahā in a Luge at **Skyline Rotorua**, there's now even more to love – three new Luge tracks, four new corkscrew turns, and more tunnels lit up with 430 colourful metres of LED lighting. Plus, Night Lugging is back on Friday and Saturday nights until 8pm.



VOLCANIC CRATER EXPERIENCE

Kaitiaki Adventure's new 6.5-hour **Mt Tarawera Volcanic Crater Experience** has extended their world-class crater walk by adding a hike around the Tarawera dome above lakes Rotomahana and Tarawera, and linking back up with the hugely popular half-day excursion on the summit of the highest of three peaks, Ruawahia.



THE ROUND TRIP

The Round Trip at **Waimangu Volcanic Valley** has you follow in the footsteps of New Zealand's first tourists. You'll uncover the stories of the Pink and White Terraces and the 1886 Tarawera eruption. This full-day tour includes return transport from Rotorua, guided walk at Waimangu, boat cruises on lakes Rotomahana and Tarawera, and a visit to the Buried Village of Te Wairoa.

GEOHERMAL WONDERS AND MĀORI CULTURE COMBO

Māori cultural performances are back at **Te Puia**! The Te Rā Guided Experience + Haka combo takes you through the carving and weaving schools at New Zealand Māori Arts & Crafts Institute, the Kiwi Conservation Centre, and the geothermal valley which includes the Southern Hemisphere's largest active geyser, Pōhutu. The cultural performance includes a pōhiri (traditional welcome), waiata (song), mōteatea (traditional chant), poi and haka (traditional dance). Available from 22 September.

NEW EXPERIENCES - AND NAME - FOR TAMAKI MĀORI VILLAGE

New Zealand's most-awarded cultural attraction is now called **Te Pā Tū** - and they've created new guest experiences that celebrate seasonal kai (food) and Māori culture. For Māori, kai is integral to any special gathering, so you'll experience the mystical Ahi Taitai (fire ceremony) before stepping into the tawa forest canopy for seasonal kai horotai (canapés) and a lantern-lit walk to a lavish three-course family-share hākari (feast).

WHAKA GEOTHERMAL TRAILS

Whakarewarewa - The Living Māori Village has teamed up with **Electric Bike Rotorua** to offer an exclusive Whaka E-Bike Trail experience into previously non-accessible areas of the Whakarewarewa Valley Reserve. This is a great leisurely activity for families, couples, and small groups up to 10, and for nearly all levels of fitness. Children can ride independently or on a dual-carry electric bike, and you can pre-order a picnic hamper to take with you.



NEW ZEALAND'S NEWEST GREAT RIDE

A new mountain biking trail, the **Whakarewarewa Forest Loop**, has opened and recently been named New Zealand's newest Cycle Trail Great Ride. The 33km trail is perfect for confident riders of almost any age and fitness level, and takes riders through some of the iconic features that Rotorua mountain biking is renowned for: fun trails, Māori culture, towering California redwood trees, geothermal activity and stunning views.

BASECAMP AT SECRET SPOT HOT TUBS

Secret Spot Hot Tubs has created a new space for families and friends to hang out and enjoy a refreshing drink (alcoholic or non) and nibbles. The new BaseCamp features a safari tent with bar and lots of seating indoors and out, plus a campfire.

SWEET TREATS

Goody Goodies in the city centre offers a delicious range of freshly baked treats that are sure to satisfy any sweet tooth. Trying to decide between their signature loaded brownies, scrummy slices, Nan's melting moments, mini cupcakes and more is likely to be your toughest decision to make. For savoury lovers, grab one of the giant sausage rolls.

THE JUNCTION ON FENTON

We're thrilled that part of the historic building that houses the i-SITE Visitor Information Centre has been converted to a beautiful café that highlights the building's 1900s origins. Vintage ceramic tiles covering the front counter, an antique safe door that's been repurposed, and other vintage and rustic touches bely the newness of **The Junction on Fenton**. Enjoy a coffee and scone on the sunny covered porch, order from the breakfast or lunch menu, or cosy up on the classic Chesterfield sofa in the back nook while you sip a locally made Volcanic Hills wine. ❖



CRANKWORX RETURNS THIS NOVEMBER!

This year, Crankworx Rotorua will once again be the final stop of the Crankworx World Tour, celebrating the season's champions and crowning the King and Queen of Crankworx. And YOU are invited to join the party!

Crankworx Rotorua kicked off in 2015, becoming the first Crankworx event to be held outside of North America and Europe. Since then, it's played host to some of the most memorable moments in Crankworx history and is now referred to as "the soul of Crankworx" due to the unique ability to combine riding with our amazing New Zealand culture.

Visiting Rotorua during the Crankworx World Tour Festival is an experience that cannot be missed. So, pack up your bike, get yourself a festival pass, and enjoy everything that Rotorua has on offer!

ROTORUA ACCOMMODATION

Sort your accommodation as soon as you know you're coming. As a buzzing tourist destination, Rotorua has the entire range of accommodation options, from backpackers and holiday parks to a five-star hotel and loads of B&Bs – and they book up well in advance during Crankworx.

Take a look at RotoruaNZ.com/accommodation or contact our i-SITE travel experts for their free advice and booking services.

CRANKWORX FESTIVAL PASSES

Three-day, two-day and single-event passes, plus upgrades, are available for purchase now at crankworx.com, or at the gate. The ticketed events will take place at Skyline Rotorua from 9 to 13 November.

THE MAIN EVENT

With a stacked schedule serving up pro, amateur and CWNEXT races, Kidsworx, a bustling expo and retail village, plus awesome local food trucks, there's something for everyone.

On your way up to where the action takes place, keep an eye out for the giant screens near you showing all the action live from various vantage points.

Wear practical shoes as you'll be walking uphill on uneven terrain. Pack a sunhat or cap, sunscreen and a rain jacket.

You're welcome to bring non-glass drink bottles and reusable cups, if you'd like to help us look after the planet. Bringing your own food is fine, too.



AFTER THE EVENT

This event should come with a warning: After watching all the racing, flipping, whipping and tricking, you're going to want to hit the trails too, whether you're a competitive downhiller, weekend warrior, or have never even touched a mountain bike.

With more than 200 kilometres of world-renowned mountain bike trails weaving, dodging and undulating through **Whakarewarewa Forest**, Rotorua has been a mountain biker's heaven for decades.

The trails range from Grade 1, perfect for beginners and families with younger children, to Grade 5 for expert riders.

If you're looking to tick a Great Ride off your bucket list, the 33km Whakarewarewa Forest Loop is New Zealand's newest trail to earn Great Ride status.

If it's your first time riding here, [Trailforks.com](https://www.trailforks.com) offers the most up-to-date information for trail grades, navigating, and any temporary closures (please note the network is positioned in a working forest; it is vital to follow any special instructions, closures and/or detours as noted).

Once the Crankworx Festival ends, **Skyline Rotorua's MTB Park** will once again be open to the public, providing access to the very same world-class downhill mountain bike trails used by the Crankworx competitors. The park consists of 12km of trails with varying terrain for most ability levels, and one of the awesome aspects of this park is that, with the aid of certain gondolas that have been specially designed to accommodate bikes, you'll have zero uphill riding!



BRINGING YOUR OWN BIKES

While **Mountain Bike Rotorua** and **Planet Bike** have the latest models of mountain bikes – including electric versions – available for hire, we know that sometimes you prefer to bring your own gear. A variety of Rotorua accommodation providers, from **Rock Solid Backpackers**, **Aura Accommodation**, and **Jet Park Hotel Rotorua**, to **Regent of Rotorua** and the five-star **Pullman Rotorua** provide free, secure bike storage for their guests. Some have bike wash stations as well.

Add to this the numerous tourism activities and attractions in Rotorua, and you have endless opportunities for everyone to have fun on bikes and off.

Rotorua is a great place to ride and that's hugely due to our manaakitanga. Pay it forward! ❖



ROTORUA HAS IT ALL



Velocity Valley

From adventures to history and geothermal wonders, to culture and natural beauty, there is truly something for every Rotorua visitor.

ADRENALIN-SPIKING THRILLS

One way to look at Rotorua is to see it as one massive family-friendly playground with enough activities to keep you busy for a week or more!

Get down and dirty with some off-road vehicle fun. At **Adventure Playground**, check out the guided 4WD buggy tour. At **Off Road NZ**, you have Monster 4X4 Thrill Rides in a specially modified Jeep. Both offer awesome 4X4 self-drive options too, and Off Road is the only place in the country where you can race karts imported from France on the same track as the professional racers.

Buckle up and head to **Velocity Valley**, home of speed and adrenaline. Here you'll find the world's only Shweeb Racer, a human-powered monorail racetrack; Rotorua Bungy, a New Zealand icon; Agrojet, New Zealand's fastest jet sprint experience; the 40-metre tall Swoop which swings you toward the earth at 130kmph; and the Southern Hemisphere's only wind tunnel, Freefall Xtreme.

If you love adventures on the water, then rafting or kayaking on the world-famous Kaituna River is a must. Guided whitewater rafting tours with **Kaitiaki Adventures**, **Kaituna Cascades**, **River Rats** and **Rotorua Rafting** start out on a gentle Grade 2 scenic section that winds its way through beautiful native forest. You'll navigate a few rapids and small waterfalls as you work your way up to the full-on Grade 5 action that features the world's highest commercially rafted waterfall at seven metres.

New Zealand Whitewater Academy tackles the Kaituna in tandem kayaks, with you in front and one of their expert guides in the back seat.

On the lakes, **Katoa Lake Rotorua** offers a number of unforgettable jetboat experiences that'll see you blasting across the water up to 85km/h as you scream toward landmarks and hot pools.



Joel McDowell

Off Road NZ



Graeme Murray

Waimangu
Volcanic Valley

Adrenalin junkies must also check out at least one of the zipline experiences here. **Rotorua Canopy Tours** and **Rotorua Ziplines** are equally awe-inspiring and spine-tingling, doing amazing mahi (work) improving the environments they operate in, and dedicated to leaving you feeling inspired and exhilarated. They have great points of difference, too, which is why we suggest you give both of them a go!

HISTORY & CULTURE BUFFS

Rotorua's history, geothermal landscape and Māori culture are very entwined and there are several ways to learn about and experience them.

Waimangu Volcanic Valley and **Buried Village of Te Wairoa** are excellent places to learn about Rotorua's tourism story, the original local Māori women guides, and the history-making volcanic eruption in 1886 that simultaneously buried one famous tourist hot spot while creating a new one.

Kaitiaki Adventures also shares the Rotorua story as they transport you via 4WD to the summit of Mt Tarawera for a crater walk with the most amazing views of the volcanic valley and well beyond, from an elevation of 1,100 metres. Another exhilarating way to get to the summit and join Kaitiaki's crater walk tour is with a **Volcanic Air** helicopter tour which offers amazing views over Rotorua and our geothermal valleys, and knowledgeable commentary from your pilot.

Like Waimangu, **Wai-o-Tapu Thermal Wonderland** (which re-opens on 22 October), **Kuirau Park**, and **Sulphur Bay Wildlife Refuge** are great for experiencing the variety of our geothermal landscapes up close and personal. Kuirau Park and Sulphur Bay are free to visit.

Of course, we can't talk about our geothermal features without mentioning our hot pools! Again, there's quite a variety, from rural to secluded to the middle of the city.

For a beautiful drive to a lush country setting, head to **Waikite Valley Thermal Pools**, about 20 minutes south of town.

Getting to the secluded **Manupirua Springs Hot Pools** is half the fun, as the eight pools along the shore of Lake Rotoiti are accessible only by boat or floatplane.

Hell's Gate is our most active geothermal reserve and the only place in New Zealand where you can soak in a natural mineral-rich outdoor mud bath, used for generations by Māori to ease joint and muscle pain.

At **Secret Spot Hot Tubs**, you reserve your own freshwater cedar hot tub and can enjoy tub-side service to top up any drinks.

Polynesian Spa, located in the city and alongside Lake Rotorua, is internationally acclaimed. Besides offering 28 pools with gorgeous views to choose from, their luxurious spa treatments provide next-level Zen.



Rotorua
Canopy Tours



Greene Murray

Hell's Gate



Miles Holden

Kaitiaki
Adventures



For a more in-depth look into Māoritanga (Māori culture, practices and beliefs) and tikanga (customs), visit **Te Puia** and the **New Zealand Māori Arts and Crafts Institute, Te Pā Tū**, and/or **Mitai Māori Village** for incredible and interactive experiences – each one of them unique.

ENJOY THE OUTDOORS

While we've already covered so many outdoor activities, we'd be remiss if we left out our incredible forest and lakes.

Whakarewarewa Forest is internationally renowned. It's the perfect place to relax in nature with a walk on your own or with loved ones. The wide trails with deep forest undergrowth make this a great place to run, as well, and are pram-friendly. The forest is free to visit.

The forest is also home to **Redwoods Treewalk** and **Redwoods Altitude**, two very different attractions that showcase the height of the towering California redwoods that were planted here at the beginning of the 20th century.

Many trails in the forest are dual-purpose so keep an eye out for mountain bikes and occasional horses crossing. Mountain biking is serious business in Rotorua. Riders come from around the globe to ride our dirt gold year-round, and some have even been known to move to Rotorua to have daily access to the 200km of trails. If you'd like to give it a go, there are plenty of trails for absolute beginners, and you can rent top quality mountain bikes and e-mountain bikes from **Mountain Bike Rotorua** or **Planet Bike**.

If you've got a bit of riding experience under your belt, check out New Zealand's newest Great Ride, the 33km **Whakarewarewa Forest Loop**, an amazing trail that's also perfectly suited for fully charged e-mountain bikes.



If you need to re-charge yourself, there are three spots along the trail to grab a coffee, snacks, and even a couple of burgers (days and hours vary).

Nature lovers enjoy the **Lake Ōkāreka boardwalk** and **Hamurana Springs Nature Reserve**, both beautiful places to slow down and disconnect from the busyness of the world, and of course golf is a fantastic way to redirect your energy, especially if you're having to avoid sinking your ball in a steaming-hot river or boiling mud pool at **Arikikapakapa Rotorua Golf Club**. The peace and tranquillity of the countryside surrounding the 18-hole **Lakeview Golf and Country Club** will also enable you to relax and enjoy your game.

Being the lakes region of New Zealand, Rotorua boasts 18 **lakes**, plus three major rivers, that are accessible year round for recreational use. For **fishing** regulations, follow those for the Eastern region, which includes Rotorua. Our lakes and rivers offer diverse angler experiences, high catch rates and big fish, so there's something for everyone.

By no means is this list exhaustive, so be sure to head to RotoruaNZ.com for more, or contact our friendly travel experts in one of Rotorua's i-SITE Visitor Information Centres. ❖



THREE DAYS OF FAMILY FUN IN ROTORUA



With so many things to do and see in Rotorua, where does one even begin? Well, right here is the perfect place to start if you're planning a few days away with your family.

DAY 1

Why not kick things off with cuddling and feeding some of the cutest farm babies you'll ever see? At the world-renowned **Agrodome**, you'll have lambs, calves and even some bunnies. Then enjoy the super fun and informative tour through a 350-acre working farm that's home to 26 different breeds of sheep, 10 breeds of cattle, alpaca, llama, horses, goats, deer, donkeys and more. Your driver and guide will stop along the way, allowing you to feed the friendly sheep and alpaca. There's more to do here, too, including the chance to milk a cow!

Just down the road is **aMAZEme**, the perfect place to try not to get lost in a 1.4km maze constructed from an immaculately pruned, head-high escallonia hedge. Kids love this and the small-animal enclosures, butterfly garden and giant lawn games.

You're welcome to bring along your lunch or snacks to enjoy in the picnic area at aMAZEme, so if that sounds appealing, head over to **Café Dynasti** in Ngongotahā to grab some takeaways from the cabinet or menu. They're

open daily until 3pm, and the food is delicious. You can dine in, as well.

Heading back toward town, stop in at **ZORB**. Upon arrival, jump into your swim gear, then Superman dive into a giant inflated ball which has a bit of warm water added to keep you sloshing around inside while you roll downhill. Choose from four different tracks (or all of them!) and let the hilarity ensue.

If tonight is Friday, for dinner, head to **Eastwood** for their famous, family-favourite wood-fired pizzas. The last orders are taken at 7.45pm, and this could work perfectly for your next activity.

If everyone still has energy to burn before bedtime, **Redwoods Treewalk & Nightlights** are not to be missed. Starting at dusk is the perfect time as you'll get the benefit of seeing the forest in daylight as you traverse 27 eco-suspended bridges. As you make your way up, the sun sets before you know it and you'll find yourself 20 metres up and surrounded by gorgeous fairy lights and giant David Trubridge lanterns. Magical!



Agrodome



ZORB



DAY 2

Be sure to start the day with a great breakfast. If you want a break from meal prep, treat yourself at one of the numerous excellent cafés in town that have great kids' menus and spaces for them to entertain themselves while waiting for their meals to arrive.

Capers Café + Store and **Third Place Café** have a playroom kitted out with toys and colouring in. **Arts Village Café**, **Eastwood**, **Okere Falls Store**, and **Trail Kitchen** have amazing outdoor spaces for the kids to run around. If you've gotten a late start today but the kids – or you – still want waffles, there's no need to worry as **Scope Café** serves breakfast all day (and, yes, that includes waffles!)

Once you're ready to resume your explorations, if you need more of your animal fix, there are several more options to consider: **Mini Golf Rotorua** with live bunnies on the course; pat the lion cubs at **Paradise Valley Springs Wildlife Park**; or feed more animals at **The Farm Tour at Heritage Farm**.

For the ornithologists in the group, check out the amazing conservation and education efforts at both **The National Kiwi Hatchery** and **Wingspan National Bird of Prey Trust**, two very unique and important organisations who are rescuing, breeding, raising and looking after some of our native birds.

A visit to Rotorua must include visiting our native glow worms in their natural habitats. **Paddle Board Rotorua** provides tours via stand up paddle boards and kayaks to see glow worm caves on our lakes, and if you'd rather keep your feet on terra firma, **Real Rotorua** offers guided walking tours to see glow worms in the forest.

If your family is a democratic one, head to the block-long, covered dining precinct **Eat Streat** tonight where everyone gets their vote on which of the dozen restaurants you'll dine at. Don't forget to save space for a sweet treat from **Lady Janes Ice Cream Parlour** on the corner closest to the lake.



The National
Kiwi Hatchery

DAY 3

Let's start day three with the super-fun **Rotorua Duck Tours**, a long-time family favourite, known for their quirky means of transportation: aboard a genuine World War II amphibious landing craft! Two tour options offer you a unique and really fun way to learn about our region and history as you cruise on land through the city and splash down into lakes as well.

And perhaps, a fitting end to your holiday would be spent at one of Rotorua's stalwarts, **Skyline Rotorua**. Enjoy the scenic trip up Mt Ngongotahā in a gondola, then race each other on one of the world-famous Luge tracks. In fact, if you've been there before, you have three new tracks to choose from, or ride all three (see page 6 for more info).

For the parents in the group, if your kids are fine on their own for a wee while, treat yourself and head over to **Volcanic Hills Winery** (in the Skyline building where you exited the Gondola) to enjoy a glass of vino or a pre-booked hosted tasting of Rotorua's own wines while the kids stay busy on the Luge, Zoom Ziplines, or Skyswing. ❖



Paddle Board
Rotorua



Rotorua
Duck Tours



NEED A PLACE TO STAY? WE'VE GOT YOU COVERED

Rotorua is home to lots of great accommodation options, with everything from luxury lodges to lakeside holiday homes and summer-pleasing holiday parks, and so much more.

LAKESIDE B&BS AND HOLIDAY HOMES

Summer isn't summer without a place near the lake. Luckily, there are a LOT of lakeside or lake-view holiday homes to choose from, whether you're a party of one or two, or a group of 20 or more.

Jack's Hut is a gorgeous little 1930s shepherd's hut sited on a hill overlooking beautiful Lake Tarawera. It's the perfect romantic and secluded spot for two to hide away and enjoy nature.

For families looking for a holiday home with lawn-to-lake aspect, complete with private jetty, **The Lake's Edge** on Lake Rotoiti, with three bedrooms and two baths, is just the spot.

Toka Ridge consists of four free-standing, differently sized villas in a gorgeous rural setting overlooking Lake Rotorua. Book the one-bedroom villa for two, or all four villas for a group up to 20.

LUXURY AWAITS

Treetops Lodge & Estate is fantastic for families and couples. Nestled in 2,500 acres of 800-year old native forest, this award-winning lodge is a nature lover's sanctuary.

Overlooking the sparkling waters of Lake Rotorua, **Peppers on the Point** is an intimate luxury retreat with

spectacular views over Lake Rotorua to historic Mokoia Island.

The rooms and suites at **Regent of Rotorua** feature elegant decor with a touch of glamour and loads of comfort. Relax and savour the outdoor heated swimming pool and indoor mineral pool.

Enjoy beautiful views of the city, Lake Rotorua, geothermal areas, mountains, and forests from the luxurious rooms and suites at the five-star **Pullman Rotorua** hotel.

HOTELS & MOTELS

Located down a quiet street, **Aura Accommodation** is just two blocks from the city centre, exactly 280 metres from Eat Street, even closer to the Rotorua Lakefront, and 300 metres from Government Gardens.

Jet Park Hotel Rotorua knows our four-legged family members are important! Their Pampered Pet Package provides a pet-friendly room complete with pet bed and blanket, bowls, treats and a toy, so your fur baby can holiday in Rotorua too.

From different vantage points, **Millennium Hotel** and **Novotel Rotorua Lakeside** overlook Lake Rotorua, have modern, comfortable rooms, and restaurants, bars and spa pools.

Rydges Rotorua is within walking and biking distance to the famous

Whakarewarewa Forest and overlooks the incredible geothermal Te Whakarewarewa Valley.

HOLIDAY PARKS

Awarded New Zealand's Spirit of Hospitality Award, the Qualmark 4-star **All Seasons Holiday Park** is a firm family favourite, and includes a few fenced camping sites for pooches or wandering children.

Blue Lake TOP 10 Holiday Park is located across from one of our favourite lakes, the beautiful Tikitapu (aka Blue Lake), and surrounded by native bush.

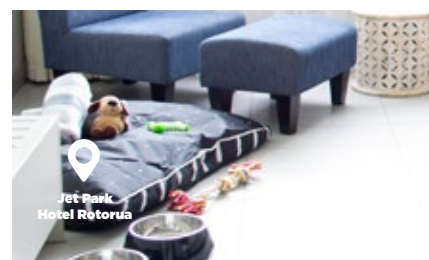
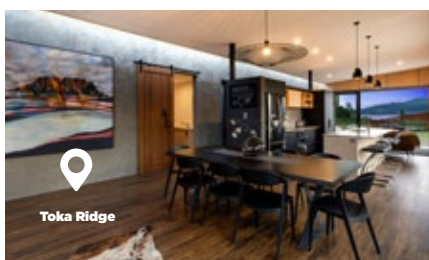
CITY-CENTRE BACKPACKER

Rock Solid Backpackers offers a variety of room styles with cheery, colourful linens and thoughtful touches. Private rooms with and without ensuites are available, as well as dorm rooms, family rooms, and female-only dorms.

NEED MORE SUGGESTIONS?

Contact our i-SITE team for expert advice and free booking. The team is the only booking agent in New Zealand to offer a 100% money-back guarantee that your accommodation will be exactly as they promise - no questions asked!

We recommend booking in advance as much as possible. ❖



Ride New Zealand's newest Great Ride



ROTORUA

rotoruanz.com



SELF-DRIVE RAIL CARS RAILCRUISING

Imagine sitting in control of your own rail car travelling along a railway line with nothing ahead but the unobstructed curve of the rail stretching out into the distance.

RailCruising is the tourist activity that allows people just like you the ability to travel along railway lines in your own powered self-drive, 4-seat railway vehicle called the RailCruiser.

The rail journey of 20km takes approximately 1.5 hours return through the beautiful Dansey Native Forest and rolling farmland with views out over Lake Rotorua. Listen to the commentary and discover a unique piece of New Zealand railway and local history.

The RailCruiser has comfortable seats with unobstructed views, is fitted with clear drop-down waterproof sides, windscreen wipers, and blankets.

RailCruising is a special experience to be shared with family and friends. It is popular with clubs and social groups with many combining RailCruising with lunch or dinner at the iconic Mamaku Railway Station.

How does RailCruising work? Groups of RailCruisers spaced apart, travel 10km together in one direction from Mamaku Railway Station to Tarukenga

Railway Station. At Tarukenga the Rail Cruisers are then turned and head back to Mamaku.

Cruising along at 20km/hr, you can listen to the audio tour and discover a unique piece of New Zealand railway history. This is the ultimate way to experience a railway.

Trips depart daily from Mamaku Railway Station at:

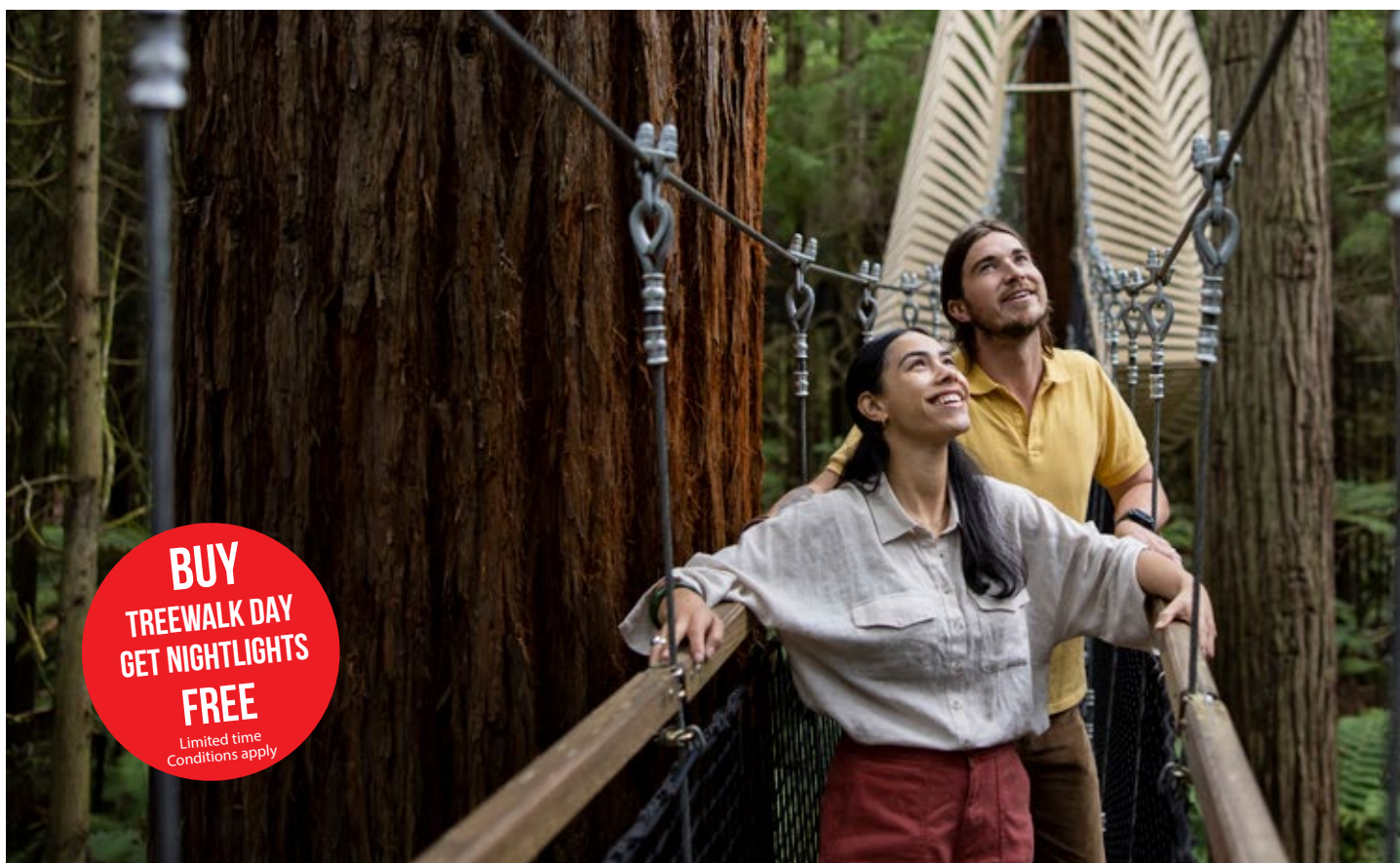
11am, 1pm & 3pm (Nov-Apr)
and 11am & 1pm (May-Oct).

Bookings are essential.

"What a great innovation! These little trains take you on a wee journey of 19km's return through the native forest seeing Farmland and Lake Rotorua."

Recent TripAdvisor Review.





**BUY
TREETWALK DAY
GET NIGHTLIGHTS
FREE**
Limited time
Conditions apply

REDWOODS TREETWALK & ALTITUDE

The heart of Rotorua is found in the Redwoods, where nature can be experienced in the daytime and magic comes to life at night. No visit to Rotorua is complete without experiencing the Redwoods. This is a Rotorua Must Do.

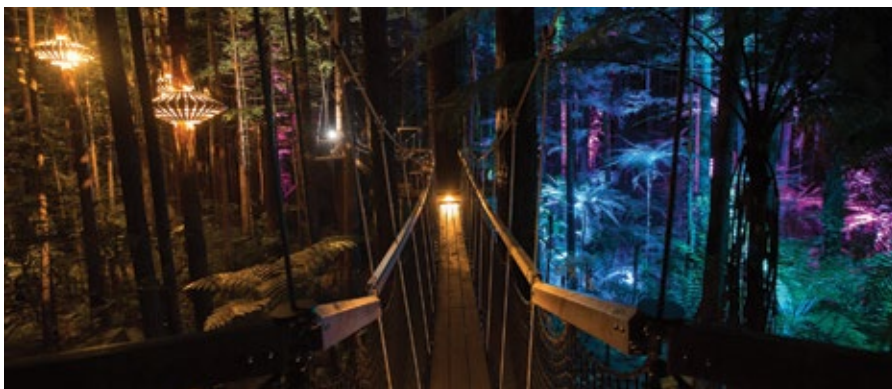
Here are three ways to enjoy the forest...

REDWOODS TREETWALK

Now synonymous with Rotorua, the Treetwalk is not to be missed. The award-winning eco-tourism walk is 700-metres long, featuring 28 suspension bridges and viewing platforms.

Making its way through the canopy, Treetwalk is the best way to forest bathe, and take in the 120-year-old Redwood grove where some of nature's magic happens... the trees here grow up to ten times faster than in other parts of the world, producing gentle giants that host unique fauna and flora.

Perfect for couples and families to take in Rotorua's most beloved treasure, where design meets nature.





REDWOODS NIGHTLIGHTS

Under the cover of darkness magic happens. New Zealand's most popular evening tour just got better, with the addition of the new Trubridge walk-in lantern. The thirty-four lanterns turn Rotorua's beloved Redwoods into New Zealand's real-life enchanted forest. Unique and intricate lighting brings the forest to life and makes a visit truly stunning no matter the weather.

Young and old fall under the spell of this amazing forest, that locals cherish as a place to renew, refresh, and recharge.

REDWOODS ALTITUDE

Experience even more of the spectacular Redwoods Forest!

Looking for something a little more exhilarating? Redwoods Altitude is a separate offering from the main Treewalk and offers a guided experience, up to 25 metres high – higher than the existing Treewalk.

When Treewalk enthusiasts said build

higher, make it faster, Redwoods Altitude seemed to magically appear. This fully guided Indiana-Jones inspired journey takes visitors to the forefront of adventure. Small, guided tours are taken through a series of twenty-five themed swing bridges and three flying foxes, as they zip, jump, and balance their way through what might just be an impossible mission.

With daily scheduled departures, it is exactly what you'd expect the reboot of Treewalk as a movie to feel like. Allow 2 & ½ hours for this epic adventure, located only 5 minutes from the Rotorua CBD, this thrill will not let you down. Book the ultimate tree top adventure in Rotorua today!

Check out our website for more info - www.treewalk.co.nz

Treewalk open daily from 9am

Altitude departures daily - book your Altitude adventure at redwoodsaltitude.co.nz

(Closed Christmas Day)





WAIMANGU VOLCANIC VALLEY EDUCATIONAL FAMILY DAY OUT

Pack up the family and experience an unforgettable day exploring Waimangu Volcanic Valley – covered in regenerating native forest and fascinating flora, spectacular geothermal features and distinctive birdlife, Waimangu provides entertainment for the whole family.

RICH IN HISTORY

Waimangu's history and legacy lends itself to plenty of rich experiences and stories for the whole family. The area was created following the Mount Tarawera eruption in 1886 – which devastated the area and destroyed what was known as the 'Eighth Wonder of the World', the Pink and White Terraces.

HANDS-ON EXPLORING

Let the kids get hands-on exploring the valley including discovering the temperature of some of Waimangu's amazing geothermal features using one of the digital 'temperature gun' thermometers.

Other highlights include *Frying Pan Lake* – one of the world's largest hot water springs with a surface area of 3.8ha – and the picturesque *Inferno Crater Lake* which rises and falls as it heats and cools.





AUGMENTED REALITY

The wonders of *Inferno Crater Lake's* 38-day cycle can also be uncovered through Waimangu's augmented reality (AR) app.

The app brings to life many of the Valley's fascinating geological insights, like the now-extinct Waimangu Geyser, which regularly erupted in the valley between 1900 and 1904 to heights of over 400m!

Enjoy a boat cruise on Lake Rotomahana – now covering the famous Pink and White Terraces – and let the wonders of AR technology restore the sights that once brought so many intrepid travellers to the shores of the lake, and spark kids' imaginations about the mystery of the terraces' fate.

Waimangu's AR app is free to download on Apple and Android devices. Locations of interest are geo-tagged, allowing visitors to enjoy the natural beauty of Waimangu until there is something hidden to be seen with AR.

LOCAL STORE & CAFÉ

If you're looking for a caffeine fix, look no further! The Waimangu Local Store and Café has the best coffee around and a lovely, relaxing environment with great views to enjoy it in! Choose from hot and cold breakfasts, hearty lunches, Kiwi classics and perfect picnic options if you are heading out into the valley.

Pick up some essential items from the general store while you are here or check out our range of specialty food and drink, gifts and clothing made in Rotorua and around New Zealand.

Open 8:30am | Last admission 3:30pm



📍 587 Waimangu Road, Rotorua
☎ (07) 366 6137

✉ nature@waimangu.co.nz
🌐 waimangu.co.nz





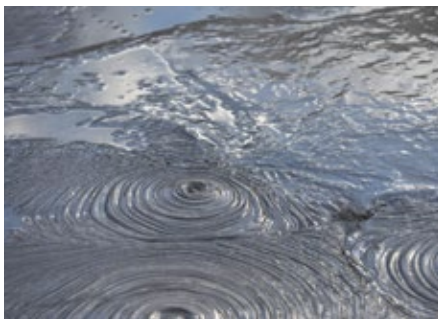
TE PUIA

There has never been a better time to experience the magic of Te Puia as we share the stories that have shaped our land and culture for generations.

Experience the unique opportunity to discover one of New Zealand's most magnificent geothermal wonderlands – featuring the largest active geyser in the Southern Hemisphere, Pōhutu Geyser, bubbling mud and beautiful native bush, as well as the New Zealand Māori Arts and Crafts Institute training the next generation of artists from around the country.

BY DAY

Te Puia offers a sprawling 60-hectare landscape of uncovered natural bush, geysers and mud pools with a remarkable walk along the Te Whakarewarewa geyser terrace. Discover Te Puia's history and lineage with a guided personalised tour – each guide adds a personal touch to inspire and help visitors truly connect with the Te Puia experience. Our guided tours run regularly each day. Please refer to our website for times and availability. These take approximately 90 minutes and are suitable for all ages, mobility and all-weather.





GEYSER BY NIGHT

Our latest experience, Geyser By Night – Te Puia Light Trails, reveals for the first time our geothermal valley under night skies, providing a multi-sensory experience that can not be replicated anywhere else in the world. Hear the stories of the past and feel the beauty of Pōhutu in an interactive journey guided by light.

The night walk is led by our knowledgeable kaiarahi (guides) who are passionate about sharing the stories of our people and our connection to the whenua (landscape) that has nourished us for hundreds of years. Geyser By Night is a 3km personally guided night trail under the stars, through Te Puia's geothermal valley (approx. 2 hour duration).

Until now, the magic hidden within Te Puia after hours has remained a secret that only Mother Nature has truly been exposed to. Discover the magic of Rotorua's geothermal wonderland.



ĀHUA GALLERY

Our Āhua Gallery has a collection of high-end, hand carved taonga, Māori made, onsite here within Te Puia. Each item comes with a letter of authenticity and it's unique significance will be explained to you by our knowledgeable Āhua Gallery team.

PĀTAKA KAI RESTAURANT

Each day our stunning Pātaka Kai Restaurant, Bar and Cafe serves fresh ground coffee, a range of cabinetry snacks and refreshments alongside either a blackboard chefs' special menu, A La Carte menu or our famous brunch, lunch or dinner buffet.

Each dish has authentic, locally sourced ingredients encompassed into it and hand prepared by our award-winning chefs.





SKYLINE
Luge
ROTORUA

*once is never
enough*



**New Tracks
Now Open!**

skyline
ROTORUA

Book online today

skyline.co.nz



SKYLINE ROTORUA THREE NEW THRILLING LUGE TRACKS!

Thrill seekers will be spoilt for choice with the opening of three new Luge tracks at Skyline Rotorua, now with five amazing Luge tracks to choose from.

Over 14 months in construction, Skyline Rotorua are proud to present the latest Luge track additions; Ultra, Twister and the Legend! The new tracks boast multiple corkscrew turns, panoramic views of the city and four newly-lit tunnels — perfect for night Lugging.

Skyline is continually evolving the Luge model and track designs, and our latest design is truly state of the art. The Night Luge has also been transformed with 170 coloured LED lights and with the addition of these new tracks our Luge now boasts a total track length of 7.3 kilometres — the longest in the world!

The new tracks are longer, smoother and safer than ever before — while the new tunnel lighting is a genuine Luge world-first. It is 100 per cent gravity fuelled fun, there is nothing else like this!

A sustainable approach was utilised for the entire project, with 12,000 native trees planted onsite and four water retention ponds created. Old Luge carts were shredded and recycled into track curbing, old concrete from

the tracks was crushed and used on site and no soil was removed from the property.

If you haven't been to visit Skyline Rotorua yet — or recently — bring your whānau and friends to check it out. It's a great way to support the region. More than 25 million Luge rides have been undertaken since the Luge opened in 1985, ensuring the attraction has become part of Kiwi culture and a must-do activity for international manuhiri.

Skyline Luge is a fun-filled adventure activity suitable for riders of all ages and experience levels. Climb aboard your Luge cart and let gravity and your sense of adventure do the rest!





SECRET SPOT HOT TUBS ROTORUA

Soak in your own cedar hot tub of fresh spring water surrounded by native ferns. Situated beside the breathtaking Whakarewarewa Forest, Secret Spot Hot Tubs is the perfect place to relax after your day's adventures.

SHARE YOUR ADVENTURE

You'll find a relaxed atmosphere and friendly welcome when you discover our secret spot in the forest. Nestled in the heart of New Zealand's mountain biking mecca, we are all about connecting you with nature, friends, and family after your day's adventures. Bathe in your own cedar hot tub beside a forest stream and enjoy tub-side bar service at the push of a button. Our fresh water comes from a beautiful aquifer spring, heated to just the right temperature for you to enjoy a relaxing 45-minute soak.

Explore our unique café and bar in a backyard setting – we have smooth manuka-roasted coffee, Good George craft beer and cider, and Mills Reef wine. Have a bite to eat, play lawn games and enjoy our outdoor campfires, or unwind with a Shiny Dip foot hot tub, free with any drinks purchase.



📍 13/33 Waipa State Mill Road, Rotorua
☎ 0800 737 768

✉ info@secretspot.nz
🌐 secretspot.nz



SECRET SPOT
HOT TUBS ROTORUA



VELOCITY VALLEY

ROTORUA ADVENTURE PARK

SINGLE RIDES

SOLO PACKAGES

FAMILY PACKAGES



CALL 0800 949 888 velocityvalley.co.nz    

1335 PARADISE VALLEY ROAD, ROTORUA | SEE WEBSITE FOR UPDATED OPERATING HOURS



ROTORUA CANOPY TOURS

Experience the world's best zipline adventures - Immerse yourself into a restored ancient forest that's like NZ like you've never seen it. Soar high above this intact native eco-system filled with towering trees, native flora, and beautiful birdsong.

Tucked away in an unrevealing location is the entrance to an ancient forest. As soon as you step into its ambience you know you're somewhere special. Surrounded by unique flora and fauna found nowhere else in the world, a green filmy layer carpets the rainforest while outstretched branches lift your eye through layers of lush foliage and up massive ancient giants standing proud. You've never seen a place quite like it and with the guidance of Rotorua Canopy Tours you can see the forest through (and above) the trees!

Named in the top 11 experiences out of 400,000 tourism activities in the world, by TripAdvisor, these are must-do experiences in NZ. There are two unique eco-tours to choose from to keep everyone engaged and excited. Conservation of the forest is a big part of the story and guests become part of this restoration journey with every ticket purchased contributing back to the rehabilitation of Dansey Road Scenic Reserve.

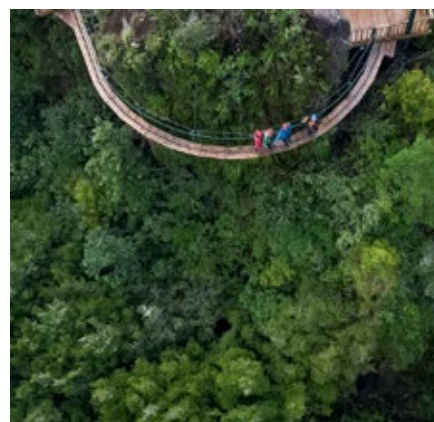
THE ORIGINAL CANOPY TOUR

Awarded the #1 Nature Activity in the World, this three-hour experience is perfect for all ages. Your world-

class guides will show you what New Zealand was once like from the top of the forest canopy and explain the conservation challenges that now exist. In between the thrill of ziplines and suspended tree bridges, you'll see and hear wood pigeons, tui, North Island robins, bellbirds, tomtits, fantails, and more as they flit amongst the tree canopy around you. Come and explore this unique environment and create amazing memories that will last a lifetime.

THE ULTIMATE CANOPY TOUR

After opening 3 years ago, The Ultimate Canopy Tour has leaped to notoriety and is the 11th Best Adventure Experience in the World. It's higher, longer, and even more spectacular than the world's best Original Canopy Tour. This experience is a step up in adventure level and incorporates some incredible new features that will blow you away. A 50-metre high suspended cliff-face walkway, swing bridges, controlled descent, and an impressive 400-metre long tandem zipline, so you can share the experience of our longest zipline together! Glide across wide open valleys, deep gorges and lose yourself in this remarkable forest.



📍 147 Fairy Springs Road, Rotorua
☎ (07) 343 1001 or 0800 226 679

✉ hello@canopytours.co.nz
🌐 canopytours.co.nz





POLYNESIAN SPA

GEOTHERMAL HOT SPRINGS
AND THERAPIES

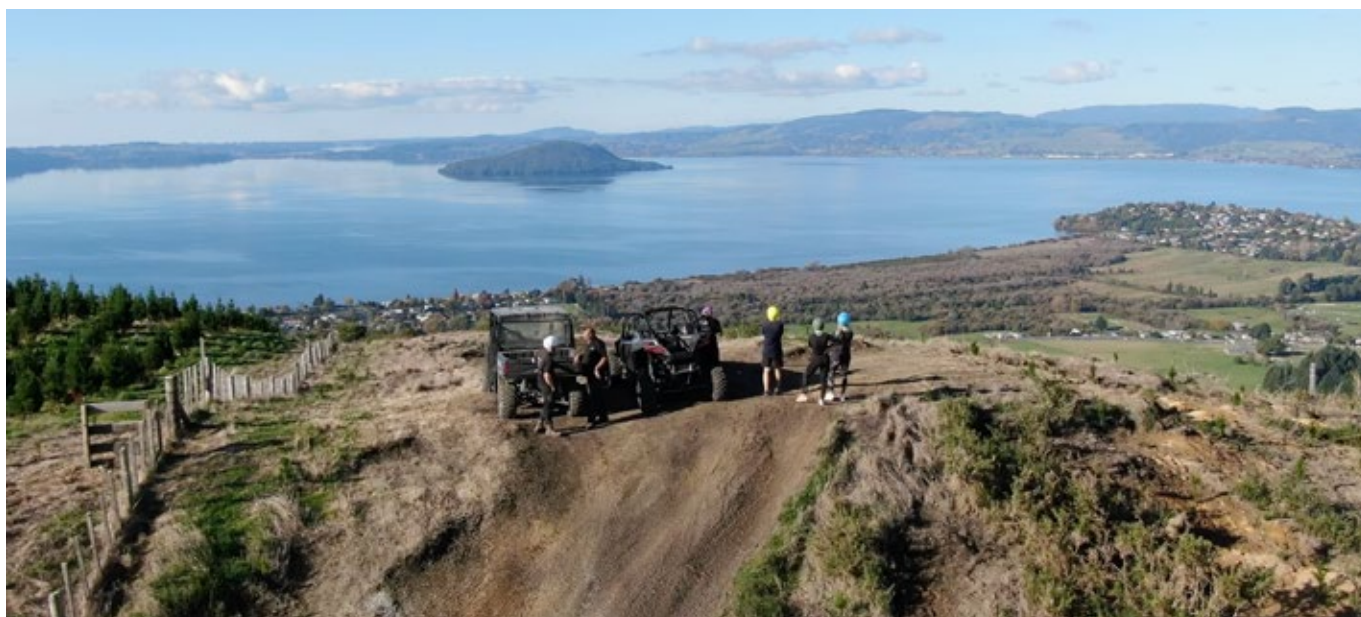


HISTORIC. THERAPEUTIC. WORLD-FAMOUS.

Nestled on the shores of Lake Rotorua lies Polynesian Spa, a geothermal bathing and day spa retreat. Discover why people have flocked to these therapeutic waters since the 1800s. Your soul will thank you for it.

P +64 7 348 1328 **A** LAKESIDE, HINEMOA ST, ROTORUA | OPEN 7 DAYS, 9AM TO 10PM

POLYNESIANSIPA.CO.NZ  



ADVENTURE PLAYGROUND ROTORUA

We are having a great time hosting our fellow kiwis who are exploring their own back yard. What better way to do it, than in our amazing 750 acre adventure playground.

Imagine being able to travel over 750 acres of native bush taking in the spectacular views over Lake Rotorua and beyond. Our Rotorua Adventure Playground trails are made from old forestry tracks dating back to the 1930s. Winding between totara, rewarewa and tawa trees, the native trees cast long shadows all along the trails. You can either ride at pace on our new 4x4 self-drive buggies or take things a little slower in the four-wheel drive buggies which will be driven by one of our professional guides.

Whether you are after an adrenaline filled off road experience, a stunning scenic horse trek or simply some fun with a gun claybird shooting, our Rotorua Adventure Playground is the place to be. All activities take in the spectacular scenery overlooking Lake Rotorua and our beautiful native bush set on Mount Ngongotaha. Buggies and claybird shooting are available in all weather. We love what we do, and we know you will too...

HIGH PHEASANT SHOOTING

Our purpose-built High Pheasant Field is a premium 2 to 3-hour experience, with instruction by some of New

Zealand's most experienced and respected shooting coaches. We can cater for groups of 2-5 shooters and even offer one-on-one private tuition. Cost includes all ammunition and clay targets and return 4WD travel from Adventure Playground reception.

NEW TO ADVENTURE PLAYGROUND

We've now got even more for you to enjoy at our base! Archery, airsoft, and paintball target shooting have been added to the fun you can have at Adventure Playground. Additional shooting facilities also available - come check it out!



📍 451 Ngongotaha Road, Rotorua
☎ 0800 782 396

✉ info@adventureplayground.co.nz
🌐 adventureplayground.co.nz





Agrodome

New Zealand's Most Unique Farm Experience

Action packed from the minute you enter the farm gate, the world renowned Agrodome Farm Experience is a must on every visit to Rotorua.



*Explore our 350 acre farm
on our Farm Tour*



*Enjoy our world famous
Farm Show*



*Impressive dog trial
after every Farm Show*



*Try and spot our
19 breeds of sheep*

Book now at agrodome.co.nz

141 Western Road, Ngongotaha, Rotorua.
Just ten minutes from the Rotorua CBD!

NGĀI TAHU Tourism



SCAN ME



PARADISE VALLEY SPRINGS WILDLIFE PARK

Interact closely with a range of New Zealand's wild animals, native birds, farm animals and trout, and get up close to a large pride of African lions.

DON'T JUST LOOK, GET HANDS ON

Animals that are found wild around the country such as deer, goats, tahr and wallabies, as well as a range of sociable farm animals like alpacas, emus and sheep can all be hand-fed throughout the day.

UP CLOSE WITH THE NATIVE BIRDS

Visit the kea, New Zealand's infamous and comical parrot in their walk-through aviary, see kakariki and kereru birds and meet our friendly tui. Stroll through our waterbird wetland for great views of native and introduced waterfowl, and look out for the different native birds living wild around the park.

CASCADING WATERWAYS

Fern edged pools show off hundreds of rainbow and brown trout. Feed the wild trout in the natural stream and get eye to eye at the underwater window. Look out for large native long-finned eels lazing in their ponds.

NATURE AT ITS BEST

Pathways through native trees lead to our freshwater spring where you can drink straight from the source, then

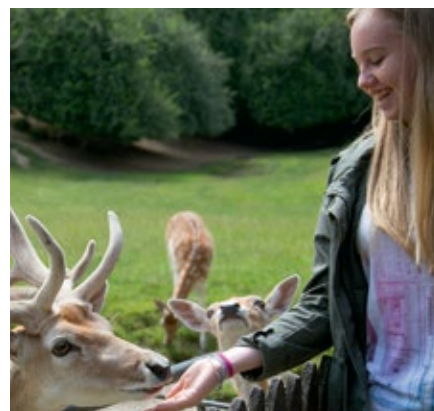
purchase some of our own bottled 'Paradise Pure' to take away with you. Take our elevated treetops walk in a tranquil and secluded area of the park, putting you up near the canopy of the trees.

THE PRIDE OF PARADISE

There is also a pride of African lions that can be seen all day in an enclosure that allows visitors to get very close to these wild animals. The afternoon feeding show is a great time to see the lions active and to learn a bit more about the pride.

Paradise Valley Springs is open every day of the year from 8am to dark, with last entry at 5pm. Lion feeding is at 2.30pm everyday.

We hope to see you at Paradise soon.



📍 467 Paradise Valley Road, Rotorua
☎ (07) 348 9667

✉ info@paradisev.co.nz
🌐 paradisevalleysprings.co.nz





EXPERIENCE THE KAITIAKI DIFFERENCE RAFT – SLEDGE – HIKE

Kaitiaki Adventures offers superior and unforgettable white-water rafting, sledging and hiking experiences. We give our clients an initiation into aspects of Maori culture through myth and legends and Karakia (Māori prayer) all whilst experiencing the ultimate adrenaline rush. World class half day experiences.

RAFT THE KAITUNA RIVER WITH OUR WORLD CLASS GUIDES

Snake through steep bush clad canyons and over 14 awesome drops including the highest commercially rafted waterfall in the world: The seven metre high Tutea Falls. Blended with a touch of Māori culture, this trip offers it all, for both white-water rafting enthusiasts and first timers. Grade 5.

KAITIAKI ADVENTURES ARE NEW ZEALAND'S ORIGINAL WHITE-WATER SLEDGING SPECIALISTS

There is something for everyone on this beautiful scenic excursion. Play holes and awesome rapids to negotiate your way through as you are in charge of your own vessel. Take the river on at eye level and propel yourself through the water by the flippers on your feet. Our qualified guides are there to encourage, motivate and help you where necessary.

NEW ZEALAND'S ONLY MT TARAWERA VOLCANIC CRATER WALK

Experience the majesty of Mt Tarawera. Infamous for its eruption on June 10th, 1886, Mt Tarawera created the world's youngest geothermal valley of

Waimangu, at the same time destroying the legendary Pink and White Terraces. This fully guided walking experience encompasses the unique landscape and history of the area.

Beginning with an off-road 4x4 journey through native New Zealand bush, transporting you to the craters edge. With unmatched scenic vistas and 360 panoramic views this experience is ideal for all ages and includes an optional run in to the heart of the volcanic crater.

No previous experience is required on any of the excursions we provide. Kaitiaki Adventures will give you all the training and safety equipment of the highest standard to make it a safe yet unforgettable journey.

Our world class guides are all NZQA Qualified and our business is QualmarkGOLD Endorsed and a Maritime Safety certified operation.





KAITUNA CASCADES

Join the original Kaituna rafting company for unbeatable grade 5 white-water experiences and epic combo tours in Rotorua & Tauranga.



KAITUNA RIVER ROTORUA

The Kaituna River in Rotorua is simply one of the best rafting experiences anywhere! It flows through an amazing canyon surrounded by native jungle and has 11 epic rapids and 3 waterfalls - with Tutea falls being the world's tallest commercially rafted waterfall!



HOT POOL COMBO

What better way to celebrate your epic Kaituna rafting trip than by sinking into the naturally heated geothermal hot pools of Hell's Gate only 8 minutes down the road! All you need for both activities are your swimwear and towel - too easy! One of the hottest combos around.



WAIROA RIVER TAURANGA

The Wairoa River in Tauranga is one of the hardest and most fun tours in NZ - grade 5 action at it's best! A half day trip including a snack lunch after. The trip is set in a rocky, boulder filled gorge with many epic rapids and has optional cliff jumps. You can combo this with the Kaituna too!

📍 18 Okere Falls Road, Rotorua
☎ 027 276 5457

✉ info@kaitunacascades.co.nz
🌐 www.kaitunacascades.co.nz



DRIFT KARTZ

Race on one of the slipperiest indoor go kart tracks in New Zealand.
With the best price on go karting in Rotorua.

Try out our purpose-built slippery indoor go-kart race track. Perfect for all weather conditions.

Our race track has a special coating giving you one of the most difficult racing surfaces you will ever encounter, making for an out-of-control racing experience.

Imagine trying to control an out-of-control race car! That's what DriftKartz is all about.

Come and try out our new 400cc kartz!

Great for:

- Team building
- Corporate events
- Sports teams
- School
- Social clubs



📍 10 Old Taupo Road, Rotorua
☎ (07) 345 6211

✉ admin@driftkartz@xtra.co.nz
🌐 driftkartz.co.nz





NZ'S ONLY GEOTHERMAL MUD SPA.

HELL'S GATE

Brought to life by the legend of Rūaumoko, our land has excited and soothed visitors since the dawn of time. Around every turn you'll experience something different – from steaming cliffs and mud volcanoes, to muds and waters that have healed battle-scarred bodies for centuries.

www.hellsgate.co.nz

(07) 345 3151 @hellsgatenz

TRY OUR KIWI EXPERIENCES



**QUAL
MARK
GOLD**

LIGHT
FOOTPRINT
SAFE
& SOUND
WARM
WELCOME

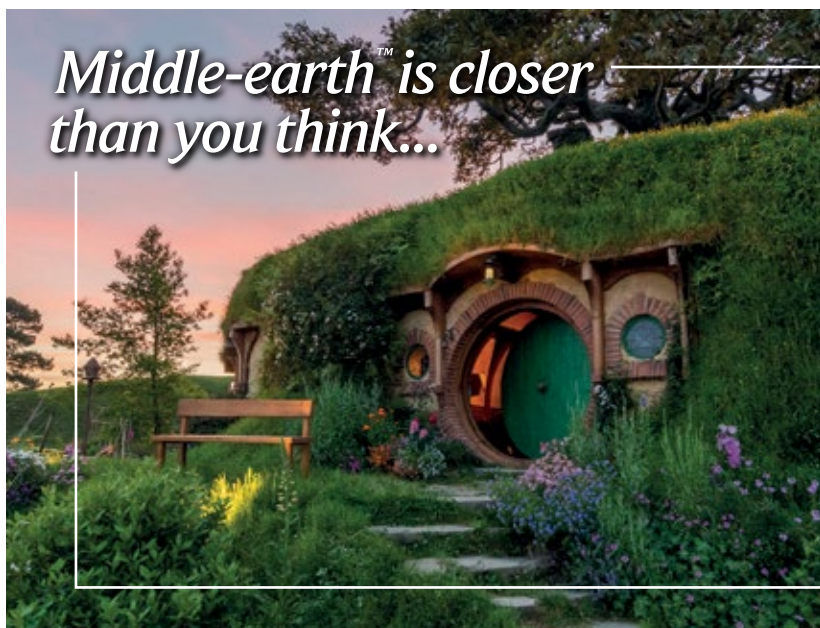


- EXPERIENCE BY FLOATPLANE • FLOATPLANE LAKESIDE PICNIC GETAWAY
- TARAWERA FALLS VOLCANIC HELI HIKE • FLOATPLANE/JETBOAT/GOLF EXPERIENCE

Lakefront Drive, Rotorua City Lake Front, Rotorua NZ | 0800 800 848 | VOLCANICAIR.CO.NZ



Middle-earth™ is closer than you think...



In the heart of New Zealand, experience a slice of real Middle-earth™ and step into the lush pastures of the Shire™ with a guided tour of Hobbiton™ Movie Set, as featured in *The Lord of the Rings* and *The Hobbit* Trilogies. You will be taken around the 12-acre set; past Hobbit Holes™, the Mill and into the world-famous Green Dragon Inn, where you will be presented with a complimentary, exclusive Hobbit™ Southfarthing™ beverage to conclude your adventure.

HOBBITON™
• MOVIE SET •

501 Buckland Road, Hinuera | 07 888 1505 | www.hobbitontours.com

3D TRICK ART GALLERY

Visual trickery at its finest when using your camera.



Art, not as you would expect it to be!
A perfect place to get memorable photos for your family and friends.

Being the only 3D Trick Art Gallery in New Zealand you will not be disappointed with the 53 pieces of artwork that you will find yourself a part of.



Where else can you find yourself climbing mountains, riding Alpacas, standing stranded on an ice edge, trying to stop yourself becoming a crocodile's dinner then flying away in a hot air balloon, all in one day?



This indoor activity is great to visit in any weather, get out of the rain, or cool down on those hot days in our air-conditioned areas, the **3D Trick Art Gallery** is the place to be.

📍 171 Fairy Springs, Rotorua
☎ (07) 349 0920

✉ info@3dtrickart.co.nz
🌐 3dtrickart.co.nz





ROTORUA DUCK TOURS

Explore Rotorua's incredible lakes district on New Zealand's only WWII Landing Craft, 'The Duck'. Experience the thrill of driving from land to lake without leaving your seat. Perfect for all ages.



On the guided tour you will experience the thrill of riding in an authentic WWII amphibious craft, affectionately known as a "duck", view spectacular natural landscapes and Rotorua's incredible lakes district. Splashdown on up to 4 lakes while being entertained and informed by our legendary guides who will bring Rotorua alive by



retelling stories of the past, along with providing information on Māori culture, geothermal wonders, historic sights, flora and fauna and much more. Learn about the Ducks' WWII history. Two tour options available, the Rotorua City and Lakes Tour (90min) and the Tarawera and Lakes Eco-Tour (120min) running every day in all weather. Our



Tarawera & Lakes Eco-Tour is a more focused look at Rotorua's rich history and environment. Tours depart at regular intervals throughout the day and are perfect for both young and old.



📍 1241 Fenton Street, Rotorua
☎ (07) 345 6522

✉ info@ducktours.co.nz
🌐 rotoruaducktours.co.nz



LAKEVIEW GOLF AND COUNTRY CLUB

Come and enjoy a unique 18 hole par 72 golfing paradise with stunning views where everyone is welcome.



The golf course has undulating fairways and challenging greens with stunning views overlooking Lake Rotorua and Mokoia Island. Hazards include bunkers and bush clad gorges. As you play your round of golf you will enjoy the spectacular vistas across Lake Rotorua of Mount Tarawera and Mount Ngongotahā which stand



proudly steeped in local history in the Rotorua landscape. The peace and tranquility of Lakeview and the sounds and antics of native birds such as the tui, bellbird, fantail and kereru will add to this unique golfing experience. The club has a fully stocked pro shop and covered driving range for all your golfing needs. Clubs, trundlers and



electric carts are available for hire. Catering and bar facilities are available on Tuesdays, Saturdays and Sundays, other days by arrangement. Hold your corporate day or staff function with us this year! All enquiries can be made by contacting the Pro Shop. **Mention this ad and receive 10% off your green fees.**

☎ (07) 357 2341
✉ info@lakeviewgolf.co.nz

🌐 lakeviewgolf.co.nz
📍 704 State Highway 5, Tarukenga, Rotorua





BURIED VILLAGE
of TE WAIROA

Where stories of the
TARAWERA ERUPTION
COME TO LIFE

Museum - Excavated sites
Waterfall Trail - Café

2021 Travellers' Choice
TripAdvisor

QUAL MARK
GOLD

Book Online
Today

www.buriedvillage.co.nz
1180 Tarawera Road, Rotorua

f #BuriedVillage
i #BuriedVillage

BURIED VILLAGE

New Zealand's most-visited archaeological site.



The 1886 Tarawera eruption destroyed the Village of Te Wairoa, the Pink and White Terraces and with it the birthplace of tourism in New Zealand.

Learn how this historic New Zealand event devastated the landscape and lives of the people of Te Wairoa and the surrounding areas. Our museum exhibitions share remarkable stories of



human resilience, tragedy and survival. Walk over 1km of excavated heritage sites and see where the people of Te Wairoa lived and worked. Challenge the kids to Smithy's Treasure Hunt and explore the stunning scenery with a beautiful stream and waterfall walk. Stand in the spray of the magnificent Te Wairoa falls as it plunges over the Waitoharuru cliffs.



Complete your visit with a delicious bite to eat and a hot or cold beverage in our licensed onsite cafe, Smith & Co and browse our great range of gifts and homewares in our store.

Enjoy a scenic 15 minute drive from the city centre and allow approximately 1-2 hours. For opening hours please call or visit our website.

📍 1180 Tarawera Road, Rotorua
☎ (07) 362 8287

🌐 buriedvillage.co.nz
✉ discover@buriedvillage.co.nz



OFF ROAD NZ – DRIVEN BY ADVENTURE!

Encounter all terrain, action packed, premium adventure experiences while surrounded by nature. Perfect for families, friends and groups, come rain or shine! From 9am daily.



Creating fun memories and lasting impressions with unforgettable adrenaline fuelled adventures, since 1992 Off Road NZ is where you go to push the limits and have the best fun you can have off-road!

4WD BUSH SAFARI

Get behind the wheel, rugged and remote, the trail is full of unknowns with plenty of thrills along the way.



RACELINE KARTING

Exhilarating, sensational Karting fun on our 1.2km outdoor race circuit, reach speeds close to 100 km/hour on the 150 metre straight.

MONSTER 4X4 THRILL RIDE

Brace yourself for the power and brute force of an all-terrain experience. No roof, no doors there is nothing between



you and the great outdoors.

CLAYBIRD SHOOTING

Test your skills and accuracy! With real shotguns and live ammunition it's not as easy as it looks!

You Drive, You Hang On, and You Race!

📍 193 Amoores Road, RD2, Rotorua
☎ (07) 332 5748

✉ drive@offroadnz.co.nz
🌐 offroadnz.co.nz



FANCY MEOW CAT CAFE

MUST DO IN ROTORUA!

Family's Best Choice! Fur-time with the Fluffies

07-4606868 1210 Arawa Street, Rotorua www.fancymeowcatcafe.co.nz



MOTION

ENTERTAINMENT

NEW ZEALAND'S
NUMBER ONE ENTERTAINMENT MALL
WWW.MOTIONENTERTAINMENT.CO.NZ

**OPEN
7 DAYS**

XTREME AIR TRAMPOLINE PARK
STRIKEZONE TENPIN BOWLING
CHIPMUNKS PLAYLAND
LUMBERJAX MINI GOLF
MEGAZONE LASER TAG
ESCAPE MASTERS
XD DARKRIDE
HOLOGATE VR
XTREME MINI CARS
TIMEZONE ARCADE
MOTION CAFE
FUNCTION ROOMS
BIRTHDAY PARTIES

0800 HAVE FUN

**NEW ZEALAND'S
NUMBER
ONE
ENTERTAINMENT
MALL!**

WWW.MOTIONENTERTAINMENT.CO.NZ

**366 TE NGAE ROAD,
LYNMORE JUNCTION, ROTORUA**

TOTALLY TARAWERA - SOMETHING VERY SPECIAL

Just out of Rotorua is Lake Tarawera, one of New Zealand's most beautiful lakes, that offers you a full range of totally amazing experiences.



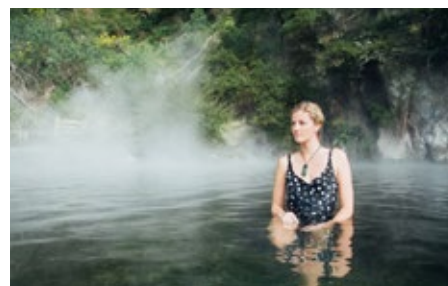
There are many walks, including the spectacular 4.5hr Tarawera Trail to Hot Water Beach or the Tarawera Falls, rated as one of the best short walks in New Zealand.

If that is too much effort, then book a discovery tour, or lake cruise with stopovers at Lake Tarawera's Hot



Water Beach or natural bush hot pool for a geothermal soak. Your guide will tell you of the fascinating history of the place that once was home to the eighth wonder of the world.

Want something even more relaxing, then catch the water taxi over to the DOC Hot Water Beach Lake-edge



campsite and stay a night or two. We can also supply a recipe book so you can cook your dinner in the sand.

For the ultimate relaxing go glamping with us. Boat access only. Own beach. Stunning location, food hampers available. See you soon.

The Landing, Lake Tarawera
(07) 362 8080

info@totallytarawera.com
totallytarawera.com





AMAZEME ROTORUA — “HAVE FUN – GET LOST!”

aMAZEme is a family-owned and operated business, centered around ‘old-school’ fun.

Set in the idyllic Paradise Valley, it has plenty to offer all ages. So why not, bring a picnic and unleash your inner child.

The prime attraction is of course our 1.4 km Hedge Maze, with an average completion time of 20 mins (first to the middle wins!).

If losing yourself doesn't tempt you, we have a range of games that surely will, including tic-tac-toe, tug of war, stilts, sack races, swing ball, giant connect 4, giant snakes and ladders and giant checkers, plus more.

For those who like small animals we have rabbits that love cuddles.

Bring the family, friends and try it for yourself!



📍 1335 Paradise Valley Road, Rotorua
☎ (07) 357 5759

✉ amazeme@xtra.co.nz
🌐 amazeme.co.nz





KATOA

LAKE ROTORUA



Excitement & exhilaration
on Lake Rotorua



Relax and unwind in an
unspoiled pocket of paradise

Book Now!

☎ 0800 538 7746 @ info@katoalakerotorua.co.nz

📱 www.katoalakerotorua.co.nz





Lady Janes Ice Cream Parlour

fresher, brighter & yummiier than ever

relax, indulge & check out our new look:

- Over 50 flavours
- Sundaes
- Milkshakes
- Smoothies
- Coffee
- Danish Waffle Cones
- Warm Desserts



@ladyjanesicecream

1092 Tutanekai St (Eat Street) | Rotorua



ZORB ROTORUA - ICONIC NZ INVENTION

Superman dive into a giant inflatable ball and roll down Mt Ngongotahā with ZORB, where the fun will have you laughing uncontrollably.

Discover FOUR different ball rolling tracks – the world's longest zig-zag Sidewinder Track, the smooth 'n' fast double Straight Track, MEGA Track – the longest, steepest & fastest track in all the land, and Big Air, with epic drops

and sweeping corners. ZORB is the perfect opportunity to let your inner child come out to play. Think of it like a giant water slide, 40 litres of (warm) water, slipping and sliding – with no tumbling involved.

📍 525 Ngongotaha Road, Rotorua
☎ (07) 343 7676 or 0800 646 768
✉ info@zorb.com
🌐 zorb.com

ZORB



AMOKURA GLASS STUDIO & GALLERY

Watch live demonstrations and shop at Rotorua's only glass hot shop and gallery.

Join us as we stretch, pull, swing, and blow molten glass into everything from ornaments to centerpieces. Feeling cold? Warm up in our shop while you watch our artisans work or browse our gallery. We sell a wide range of homeware, mementos,

and one-of-a-kind art. We're also excited to announce the return of our workshops! Create your own pumpkin, paperweight, or tumbler with our 1-on-1 glass blowing experiences. Visit our website for more information.

📍 153 Fairy Springs Road, Rotorua
☎ 027 608 6545
🌐 amokuraglass.com





ROTORUA GOLF CLUB

Visitors are always welcome. We cater to individuals, groups and corporate bookings.

Rotorua Golf Club, a unique course situated on the Arikapapakapa Reserve (the place of hot splashing water) at the Southern entrance to Rotorua, with its full 18 holes spread around both dormant and active geothermal areas, steaming hot pools, bubbling mud & ancient bunkers make

up the unique golf hazards found at this stunning thermal course.

Golf Shop, Electric Carts & our Café/Bar ensure players of all levels get to enjoy this once in a lifetime experience.

📍 399 Fenton Street, Rotorua
 ☎ (07) 348 4051
 ✉ golfshop@rotorua golfclub.nz
 🌐 arikapapakapagolfrotorua.co.nz



HORSE TREKKING LAKE OKAREKA

Horse and pony rides through native bush, over green pastures and spectacular views of Lake Tarawera.

Rides to suit all abilities from beginners to experienced riders. Experienced riders are able to trot and canter. Daily departures at 10am, 1.30pm, and times to suit. Various trekking routes on offer, depending on trail conditions and rider experience. Trek through dense native bush, onto green pastures, across

sheep and cattle country, and to the top of the farm with views over Lake Rotorua, Lake Okareka, Lake Tarawera, Lake Rotomahana, Lake Okataina, the Green Lake and Mount Tarawera. What a fantastic way to enjoy the fresh air and experience the region. Treks from 30 minutes to 3 hours.

📍 51 Acacia Road, Lake Okareka, Rotorua
 ☎ (021) 292 2233
 ✉ lucy@treklakeokareka.co.nz
 🌐 treklakeokareka.co.nz



LEVEL 13 THEME ROOMS & COSTUME HIRE

Events with a difference at New Zealand's most unique venue in the heart of Rotorua.

Make your event memorable in one of Level 13's exceptionally designed rooms or hire the full venue for up to 85 people. Each room has a unique atmosphere; be immersed in the 1920s in the Ritz and Speakeasy, enjoy a touch of Victorian class

in 221b, feel like medieval royalty in The Keep, or escape to another realm in The Rocket Room. Choose from our popular Murder Mystery, music, comedy, or quiz events, or customise your own.

📍 1141 Eruera Street, Rotorua
 ☎ (07) 347 8797
 ✉ info@level13.nz
 🌐 level13.nz





BLACK SWAN

The breeze along Rotorua's lakefront whispers a thousand captivating stories of those who were here before us. Our land and lakes have shaped us and inspired us. We are explorers and guardians of this place.

In the sunshine, Lake Rotorua is a spectacular light show; the clear blue sparkling waters ringed by their green bush-clad hills, with the bold beautiful Ngongotahā looking down over the idyllic red-roofed town, and the steam clouds of geothermal wonderlands swaying like white feathers against the blue. Then as night falls, stars fill the skies in an electric symphony of luminosity and if you listen carefully, you can hear the swans' musical whisper across the misty water.

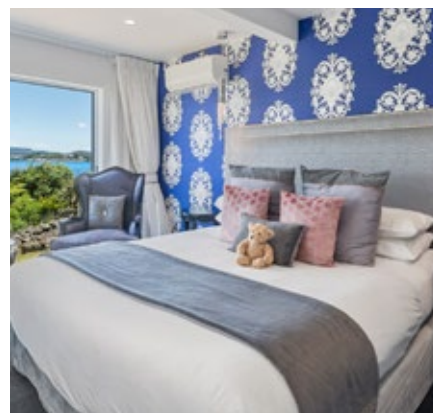
This sanctuary is home to Black Swan where the stories of these colourful lands are shared in a setting of luxury. With unspoilt views of Lake Rotorua, you'll be thoroughly immersed in waterfront atmosphere.

Every space unique and serene, come and choose your oasis. Black Swan Lakeside Boutique Hotel cares about adding value for our guests beyond a room to rest your head. Our philosophy is about sharing our story with you and your journey to us.

All this in a setting of authentic luxury, where everything you touch in these exquisite rooms is of quality. The

designer lounges were made to be lounged on and the acre of grounds, rose gardens, sweeping lawns, swimming pool, sauna, secret grotto, sandy beach, private jetty all here to add to your journey and experience.

Allow our dining room to become a sensory experience with the tastes of local wines, produce and elevated surrounds of nature and wildlife all overlooking the everchanging Lake Rotorua.





PEPPERS ON THE POINT - LAKE ROTORUA

Exclusive Lakeside 5-Star Luxury Lodge.



On the shores of Lake Rotorua, overlooking the sacred island of Mokoia sits Peppers on the Point, a luxury 5-star rated boutique lodge.

Choose accommodation from lakeview lodge suites, self-contained cottage suites or apartment style.



Unwind and relax on 5 acres of peaceful and tranquil beautifully manicured grounds and enjoy the many onsite activities - from tennis, massages and feeding the petting animals to reading a book at the lake edge. Enjoy the fine dining in the à la carte Mains Restaurant. Breakfast, lunch, and dinner are available, and



picnics can be pre-arranged to enjoy at the lake edge or to accompany an activity outing.

It is hard to believe the property is only minutes from the centre of Rotorua and within easy commute to the many adventure activities and cultural experiences in this destination.

📍 214 Kawaha Point Road, Rotorua
☎ (07) 348 4868

✉ info@onthepoint.co.nz
🌐 www.peppersonthepoint.co.nz



PRINCES GATE HOTEL

A hotel so good they built the city around it!



Prince's Gate Hotel was built originally in 1897 in Waihi, some 120km north of Rotorua, from kauri timber which was celebrated for its unsurpassed building qualities. It has endured trials and tribulations during its long and eventful history but remains today a prominent showpiece in the very heart of Rotorua. Whether you're looking for a single



guest room or a little bit of luxury in one of our spacious suites, all our 50 bedrooms and suites at the Prince's Gate Hotel Rotorua are designed to offer a luxuriously comfortable night's sleep.

Home of the Duke's Bar and Restaurant serving a mix of all-time classic favourite dishes and award-winning dining



experiences catering to groups big and small.

Iconic High Tea and event spaces a plenty, makes the perfect place for a quiet night at your local or your next glitzy event.

📍 1057 Arawa Street, Rotorua
☎ (07) 348 1179

✉ info@princesgate.co.nz
🌐 princesgate.co.nz





REGENT OF ROTORUA

Escape ordinary. For that romantic retreat, or an adventure for the family, Regent of Rotorua is an urban oasis, a sanctuary in the city, offering a restorative, rejuvenating experience.



STAY...

In luxury at The Regent - the epitome of chic accommodation in the city. Enjoy a stay in one of the 35 beautifully designed rooms, catering for the solo traveller through to families.



DINE...

At the hip and stylish Regent Room Restaurant & Bar and indulge in a range of contemporary New Zealand cuisine. Offering breakfast, lunch, high tea, dinner; including a degustation menu and a plant-focused option, sharing plates & tapas to enjoy poolside or fireside.



UNWIND...

In the thermally heated swimming pool, soak away any worries in our indoor mineral pool drawn from deep underground, relax after a day mountain biking and use our bike cleaning and secure storage areas.

📍 1191 Pukaki St, Rotorua
☎ 0508 734 368 (within NZ)

✉ info@regentrotorua.co.nz
🌐 regentrotorua.co.nz



AURA ACCOMMODATION

Centrally located accommodation setting the benchmark in friendly personalised service and sustainable practices.



Located within a block of the newly redeveloped lakefront, Eat Street and Government Gardens, Aura has become the hub for those seeking to make the most of their time in Rotorua. Whether that be taking the local team's advice and exploring a wide range of sights or enjoying the extensive facilities at Aura.



The geothermally heated pool (30-38 degrees), private geothermal pools, free scooter use, BBQ and steambox cooking facilities, Sky TV and Netflix give every reason to laze about the property.



Come and experience this unique place putting people and the environment at the forefront.

Proud winners of the 2022 Trip Advisor Travellers Choice Award and Qualmark 4 Star Silver Award.

📍 1078 Whakaue Street, Rotorua
☎ 0800 333 799

✉ info@aurarotorua.co.nz
🌐 aurarotorua.co.nz





ROTORUA FAMILY HOLIDAY PARK

Our family owned holiday park is in a quiet ideal location, no sulphur odour and just three minutes to many of Rotorua's major tourist attractions.



Enjoy our FREE UNLIMITED WiFi. In our park-like grounds we offer various options of accommodation from sites, self contained, family or motel units. When staying with us your children can enjoy our playground and TV room with air hockey table. We also offer a solar heated swimming pool (seasonal), hot spa pool, and free BBQs



in a covered outdoor dining area. For your convenience we have a 9kg gas bottle exchange, trout fishing tackle shop, dump station and full camping facilities.

We are ideally situated to take advantage of a three-minute drive to Skyline Rotorua Gondolas, mountain



biking, ZORB, Rotorua Canopy Tours, Adventure Playground, Velocity Valley, 3D Trick Art Gallery, Heritage Farm, aMAZE, and Mini Golf Rotorua with rabbits. Discount vouchers available. From camp it is a short walk to our local Ngongotahā shopping centre, world-famous trout fishing streams and Lake Rotorua.

📍 22 Beaumont Road, Rotorua
📞 (07) 357 4289 or 0800 574 289

✉️ stay@rotoruafamilypark.co.nz
🌐 rotoruafamilypark.co.nz



ROTORUA THERMAL HOLIDAY PARK

With more than 150km of purpose built mountain biking trails just a 5 to 10 minute bike ride from our park, you won't find a better location for your forest adventure.



Enjoy FREE hot pools, on-site bike wash and storage. Stay in our tent, campervan or caravan sites, dorm rooms, studios, authentic log cabins, ensuite log cabins, fully self-contained flats, or luxurious fully equipped and spacious motel units.



Our guests have access to our well maintained communal kitchen facilities, gas BBQs, bathrooms, laundry, TV rooms, swimming pool (seasonal), kids play area and kids mountain bike track. A visit to Rotorua is not complete without soaking in our free hot pools which are accessible to all guests.



All this surrounded by mature trees and gardens. Rotorua has become a mecca for mountain bikers, travelers and visitors from around the world.

📍 463 Old Taupo Road, Rotorua
📞 (07) 346 3140

✉️ info@rotoruathermal.co.nz
🌐 rotoruathermal.co.nz





KOURA LODGE

Koura Lodge offers boutique bed and breakfast lakeside accommodation in Rotorua, New Zealand.



Enjoying an unrivalled lakefront location, Koura Lodge is at the centre of it all. Just five minutes' drive to the city centre and even closer to many of Rotorua's world-famous attractions.

Offering only 10 exclusive guest rooms, all with private ensuites and lake views opening to hardwood verandas and



180-degree lake views rarely accessible to tourists.

Lodge rooms are perfect for a private getaway for couples and Lodge suites give a bit more space for those that need it or for a longer stay. A separate living room in the lodge suites lets you stretch just that bit further.



Perched at the top of the property sits our two-bedroom apartment overlooking the native gardens and out to lake Rotorua. The apartment is perfect for families with a full kitchen, living, dining and billiard table.

Spa, Sauna and Kayaks are all set out on the lakefront ready for you...

📍 209 Kawaha Point Road, Rotorua
☎ (07) 348 5868

✉ stay@kouralodge.co.nz
🌐 kouralodge.co.nz



VR ROTORUA LAKE RESORT

Set on 6 acres on the shores of the beautiful Lake Rotoiti.

VR Rotorua Lake Resort is located just 15 minutes drive from central Rotorua. It features an outdoor pool, a sauna and tennis courts. Guests enjoy free unlimited WiFi.

All rooms feature a private balcony or patio offering either stunning views

over Okawa Bay or the surrounding gardens. Each includes satellite TV, tea/coffee making facilities. The Grill Restaurant is open for breakfast, lunch and dinner and serves modern New Zealand cuisine.

For more information please visit vrrotorua.co.nz

📍 366 State Highway 33,
Mourea, Rotorua
☎ (07) 362 4599
✉ rotorua.reservations@vrhotels.co.nz



BLUE LAKE TOP 10

Blue Lake TOP 10 is the perfect destination for your escape, boasting stunning views of the Blue Lake, as well as close proximity to the city and attractions.

We offer an abundance of accommodation styles to suit any sized group or budget including lake-view motels, self-contained units, kitchen and standard cabins plus powered and non-powered sites. In the perfect location to take advantage of Rotorua's 15

beautiful lakes. Just across the road from Lake Tikitapu and a short 5-minute drive to Lakes Ōkāreka or Tarawera. Come and enjoy water activities galore, Redwoods' walking and mountain bike trails and explore surrounding native bush and walks around the lake.

📍 723 Tarawera Road, Blue Lake, Rotorua
☎ 0800 808 292
✉ info@bluelaketop10.co.nz
🌐 bluelaketop10.co.nz



Duke's

Bar & Restaurant

A WARM WELCOME AWAITS

An inspired mix of modern and traditional featuring a long list of all-time classics.

Breakfast - Lunch - Dinner

Visit dukesrotorua.co.nz
for Menu and to Book a Table



HOME of HIGH TEA

Enjoy a selection of teas with an assortment of sandwiches, freshly baked scones and assorted delicacies in the elegant ambience of Rotorua's historic boutique hotel. Traditional or Savoury menu available.

Princes Gate Hotel, 1057 Arawa Street, Rotorua | 07 348 1179



Freshly made onsite daily in small batches, so it always can be consumed within days.





Top quality ingredients are shipped directly from Italy.





GELATO MIO

Gourmet Gelato · Sorbet · Ice Cream

The Largest Gelateria in New Zealand

Open from 9.30am

1210 Arawa Street, Rotorua









Dairy free, Gluten free, Sugar free, Fat free options are always available.



RESTAURANT & BAR

STRATOSFARE

SKYLINE ROTORUA

Statosfare Restaurant at Skyline Rotorua

Rotorua's Premium Dining Experience. Bookings essential.

Phone 07 347 0027 Email rotorua@skyline.co.nz



skyline.co.nz

BREAKFAST
LUNCH &
DINNER

FULLY LICENSED
SERVING SUPREME COFFEE
INDOOR/OUTDOOR DINING

Zippy Central CAFE

7AM - 7PM, 7 DAYS A WEEK, 1153 PUKUATUA ST



ROTORUA i-SITE Visitor Information Centre is your trusted advice and booking centre



SITE



**Quality
assurance on all
accommodation
we book**



**100% money
back guarantee
on all bookings**



**Caring and
knowledgeable
local staff**



**The best prices
for activities and
accommodation**

**You can rely on our travel consultants'
expert advice and booking services for
all your Rotorua and transport needs.**

Contact us at: 07 348 5179
info@rotoruaNZ.com
Corner Fenton & Arawa Streets, Rotorua



**Visitor
Information**



ROTORUA
rotoruanz.com

New Zealand's natural wellness and spa sanctuary



ROTORUA

rotoruanz.com

📍 Waikite Valley Thermal Pools